



Quick Start Guide To:

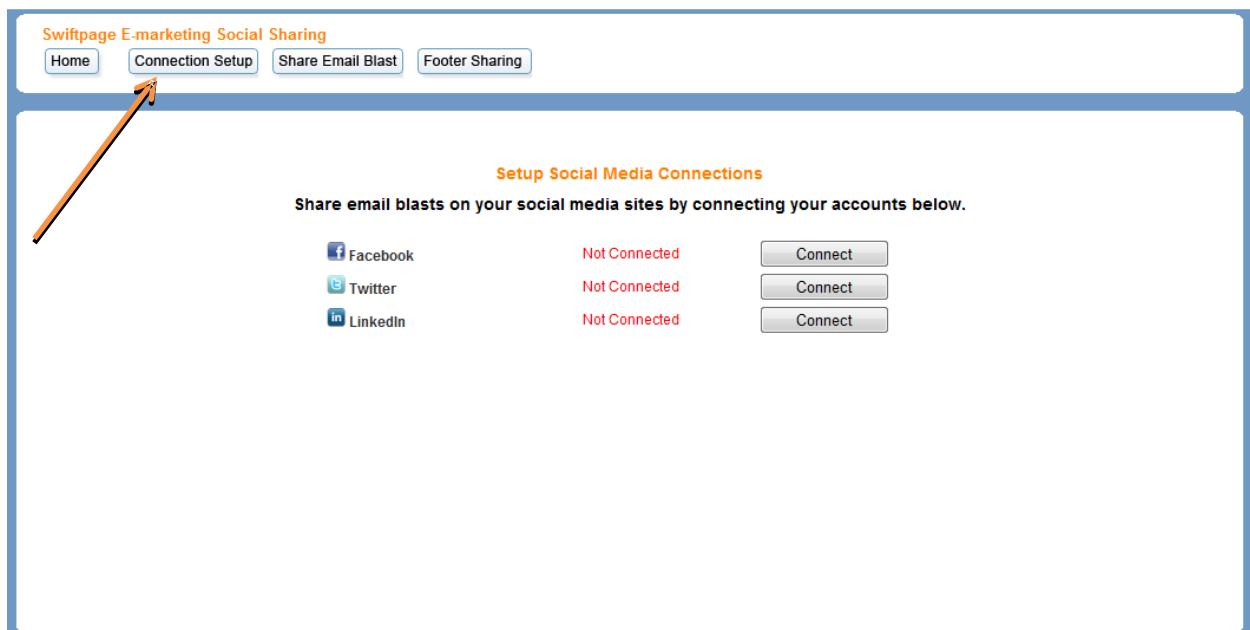
Swiftpage Social Sharing – Connection Setup

This Quick Start Guide will guide you through how to set up and use the Swiftpage Social Sharing feature.

1. Go to www.swiftpageconnect.com.
2. Input your account details at the top of the screen and click on Submit.
3. Once you are at the Home screen, click on Social Sharing.



Upon opening the Swiftpage Connect Social Sharing, you will see the following screen and automatically be placed into the page for Connection Setup:



4. This is where you connect your Social Media Accounts (Facebook, Twitter, LinkedIn). Click the “Connect” button next to the Social Media Product you would like to connect. You can choose one, two or all three of them.
5. This will route you to a Log In and ask for you to allow permission to connect the services. (below are images of each Social Media option and how they appear when connecting)

FACEBOOK:

Input log in credentials > Log In > Allow

f Facebook Login

Log in to use your Facebook account with Swiftpage Social Sharing.

Email:

Password:

Keep me logged in


[Forgot your password?](#)

Sign up for Facebook

f Request for Permission

Swiftpage Social Sharing is requesting permission to do the following:

- Access my basic information**
Includes name, profile picture, gender, networks, user ID, list of friends, and any other information I've made public.
- Post to Facebook as me**
Swiftpage Social Sharing may post status messages, notes, photos, and videos on my behalf.
- Access my data any time**
Swiftpage Social Sharing may access my data when I'm not using the application.
- Access my profile information**
About Me



By proceeding, you agree to Swiftpage Social Sharing's [Terms of Service](#) and [Privacy Policy](#) · [Report App](#)

Logged in as JH Swiftpage · [Log Out](#)

Now you are connected!


Setup Social Media Connections

Share email blasts on your social media sites by connecting your accounts below.

| | | | |
|--|---------------|---------------|---|
|  Facebook | Connected | Ryan Sullivan | <input type="button" value="Disconnect"/> |
|  Twitter | Not Connected | | <input type="button" value="Connect"/> |
|  LinkedIn | Not Connected | | <input type="button" value="Connect"/> |

TWITTER

Input log in credentials > Authorize app

Sign up

Authorize Swiftpage to use your account?


This application **will be able to:**

- Read Tweets from your timeline.
- See who you follow, and follow new people.
- Update your profile.
- Post Tweets for you.

[Forgot your password?](#)

This application **will not be able to:**

- Access your direct messages.
- See your Twitter password.



Swiftpage
By Swiftpage
www.swiftpage.com

Post your Swiftpage e-marketing updates.

[Cancel, and return to app](#)


Now you are connected!

Close Panel



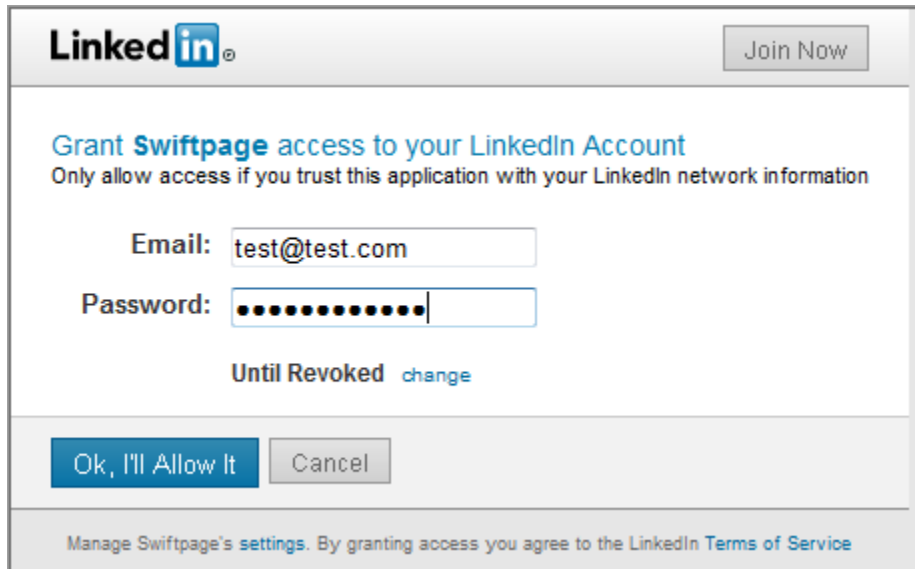
Setup Social Media Connections

Share email blasts on your social media sites by connecting your accounts below.

| | | | |
|--|---------------|---------------|---|
|  Facebook | Connected | Ryan Sullivan | <input type="button" value="Disconnect"/> |
|  Twitter | Connected | @RsullivanSP | <input type="button" value="Disconnect"/> |
|  LinkedIn | Not Connected | | <input type="button" value="Connect"/> |

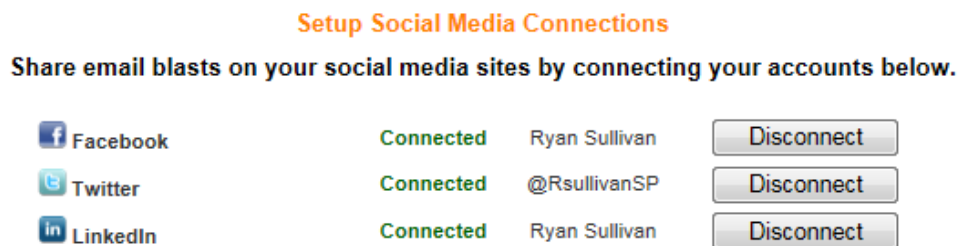
LINKED IN

Input log in credentials > Ok, I'll Allow It



The image shows a LinkedIn authorization dialog box. At the top left is the LinkedIn logo, and at the top right is a "Join Now" button. The main heading is "Grant Swiftpage access to your LinkedIn Account" in blue, followed by the subtext "Only allow access if you trust this application with your LinkedIn network information". Below this are two input fields: "Email:" with the value "test@test.com" and "Password:" with a masked password of 12 dots. Under the password field is the text "Until Revoked" followed by a blue "change" link. At the bottom of the dialog are two buttons: "Ok, I'll Allow It" (highlighted in blue) and "Cancel". At the very bottom, there is a small link: "Manage Swiftpage's settings. By granting access you agree to the LinkedIn Terms of Service".

Now you are connected!



The image shows a section titled "Setup Social Media Connections" in orange. Below the title is the instruction "Share email blasts on your social media sites by connecting your accounts below." To the right of this section is a small grey button with a question mark. Below the instruction is a table of connected accounts:

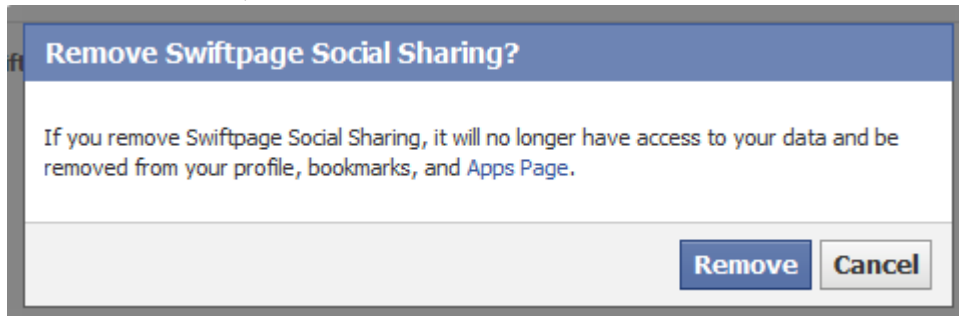
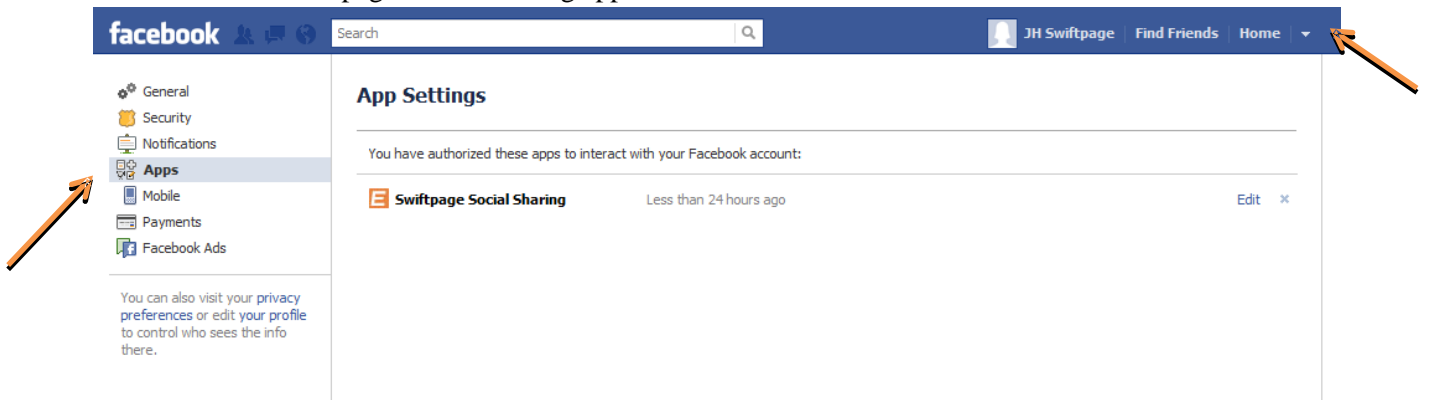
| Platform | Status | Account Name | Action |
|----------|-----------|---------------|------------|
| Facebook | Connected | Ryan Sullivan | Disconnect |
| Twitter | Connected | @RsullivanSP | Disconnect |
| LinkedIn | Connected | Ryan Sullivan | Disconnect |

6. Now you have successfully connected your Social Media sites to the Swiftpage Social Sharing feature.

Note: If you are already logged into a Facebook, Twitter or LinkedIn account on your computer system, you will automatically be connected to that account within Social Sharing. If you do not want this, you must first log out of that Social Media Site before setting up the Social Media Connections within Social Sharing. If you want to completely remove your Social Media accounts from the Swiftpage App, you'll have to fully disconnect from the Social Media site itself. Directions of how to do so below, for each Site:

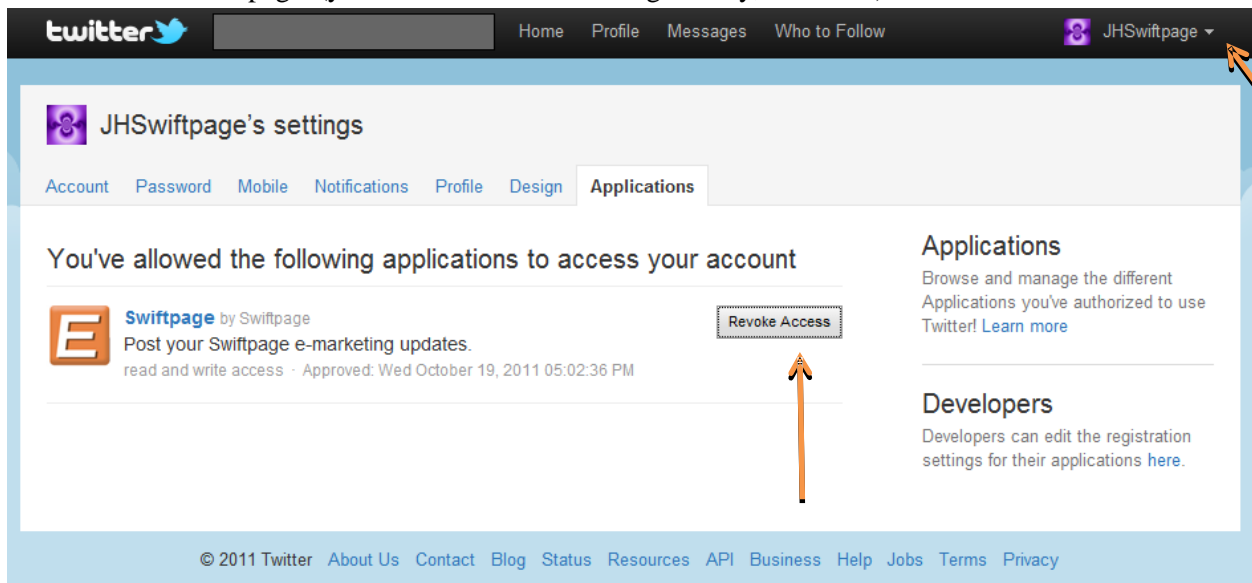
FACEBOOK

Click the Down arrow next to Home at top of page > Select Account Settings > Select Apps > Click the "X" next to the Swiftpage Social Sharing app > Remove



TWITTER

Click the Down arrow next to your username on the top of page > Settings > Applications > Click Revoke Access next to Swiftpage. (you can undo this revoke right away, if needed)



LINKEDIN

Click the Down arrow next to your username on the top of page > Settings > Groups, Companies and Applications > View Your Applications > Check Swiftpage > Remove

